







BR Lakeside

OFFICE AVAILABILITY


2700 Camino Ramon

Unit	RSF	Plan	Tour	Suite Details
Suite 105	7,919			<ul style="list-style-type: none">• Five furnished private offices• Conference room• Four huddle rooms/offices• Wellness room• Reception area• Modern, open kitchen• Storage room• Large flex room for either additional storage or a second conference room
Suite 150	55,822			<ul style="list-style-type: none">• Shell space• Tenant improvements to suit
Suite 450	29,436			<ul style="list-style-type: none">• Move in ready suite• Fully furnished and wired• Private deck• Above standard improvements throughout• Adjacent to the Executive Briefing Center* <p><i>*Available to book through Roundhouse Conference Center</i></p>



OFFICE AVAILABILITY


3001 Bishop Drive

Unit	RSF	Plan	Tour	Suite Details
Suite 400	51,555			<ul style="list-style-type: none">• Private offices• Open office spaces• Lounge area• Fitness room• CEO office with waiting room• Conference rooms• Demo room• Available Q2 2026 for TIs



OFFICE AVAILABILITY

5005 Executive Parkway

Unit	RSF	Plan	Tour	Suite Details
Suite 400	105,812			<ul style="list-style-type: none">• Full floor

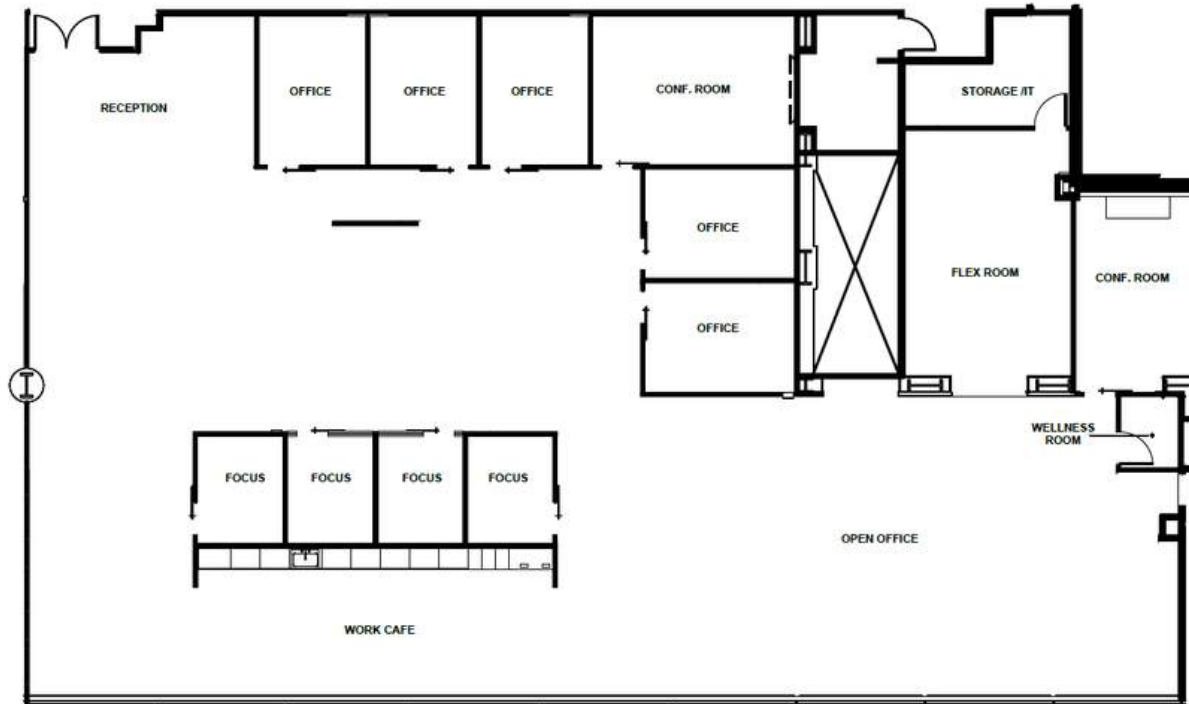
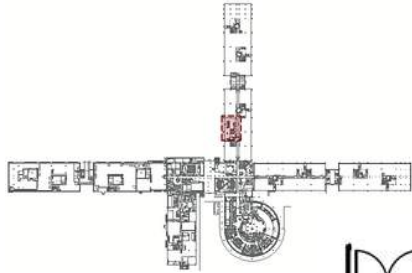


SUITE 105

7,919 RSF | 1ST FLOOR | AVAILABLE NOW

2700 Camino Ramon

[VIRTUAL TOUR](#)



SUITE DETAILS:

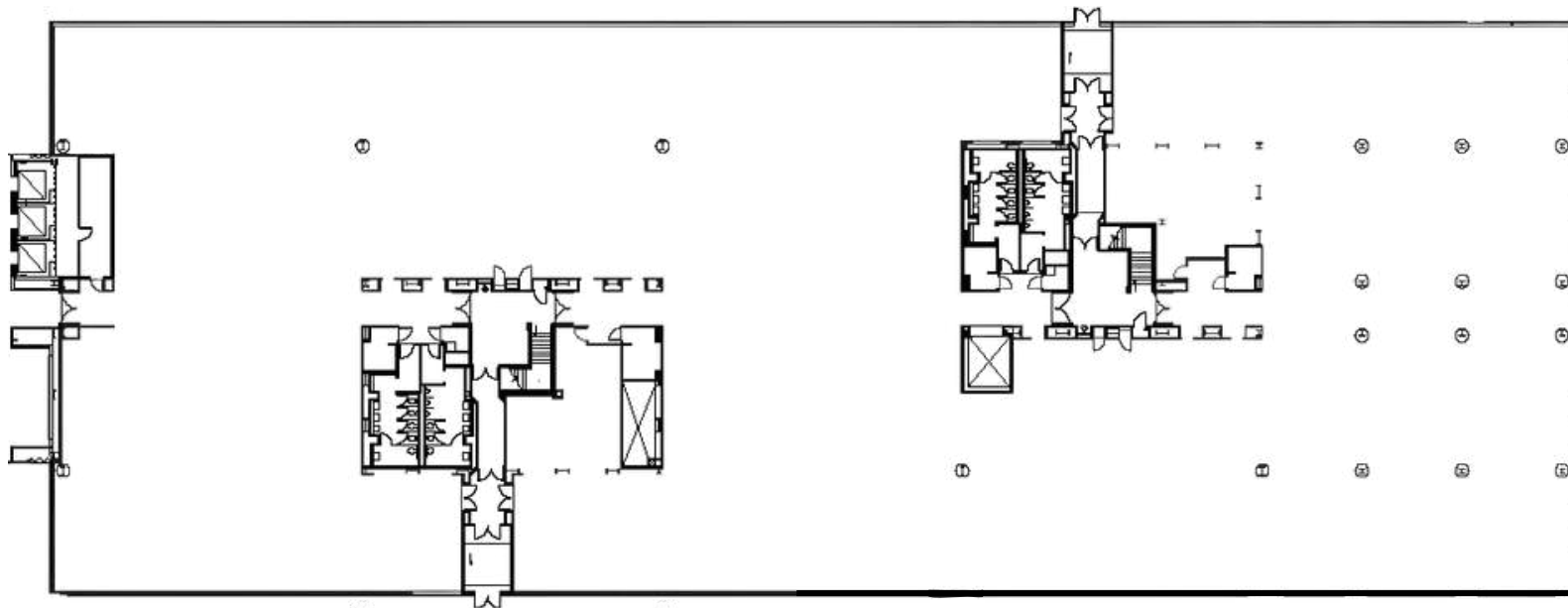
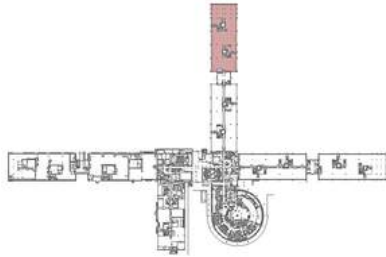
- FIVE FURNISHED PRIVATE OFFICES
- CONFERENCE ROOM
- FOUR HUDDLE ROOMS/OFFICES
- WELLNESS ROOM
- RECEPTION AREA
- MODERN, OPEN KITCHEN
- STORAGE ROOM
- LARGE FLEX ROOM FOR EITHER ADDITIONAL STORAGE OR A SECOND CONFERENCE ROOM

SUITE 150

55,822 RSF | FIRST FLOOR | AVAILABLE NOW

2700 Camino Ramon

[VIRTUAL TOUR](#)



SUITE DETAILS:

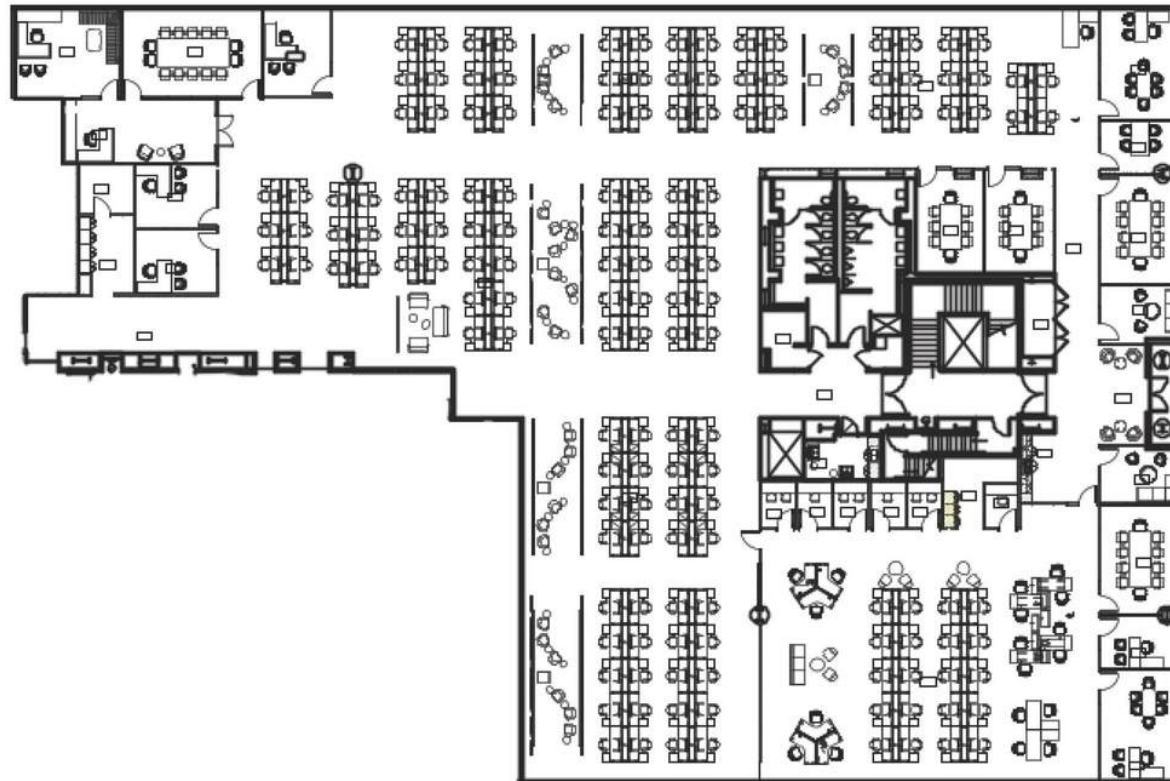
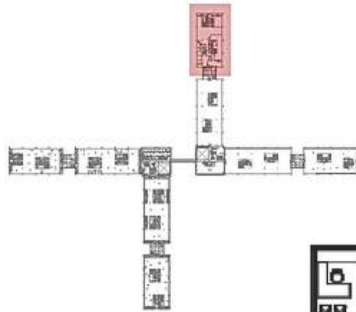
- SHELL SPACE
- TENANT IMPROVEMENTS TO SUITE

SUITE 450

29,436 RSF | FOURTH FLOOR | AVAILABLE NOW

2700 Camino Ramon

[VIRTUAL TOUR](#)

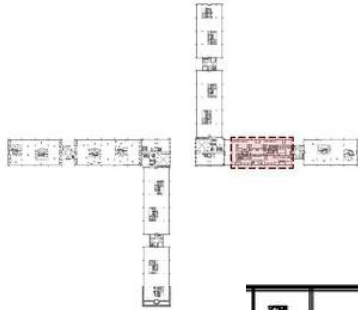


- SUITE DETAILS:
- MOVE IN READY SUITE
 - FULLY FURNISHED AND WIRED
 - PRIVATE DECK
 - ABOVE STANDARD IMPROVEMENTS THROUGHOUT
 - ADJACENT TO THE EXECUTIVE BRIEFING CENTER
- [AVAILABLE TO BOOK THROUGH ROUNDHOUSE CONFERENCE CENTER](#)

SUITE 400

51,555 RSF | FOURTH FLOOR | AVAILABLE Q2 2026

3001 Bishop Drive



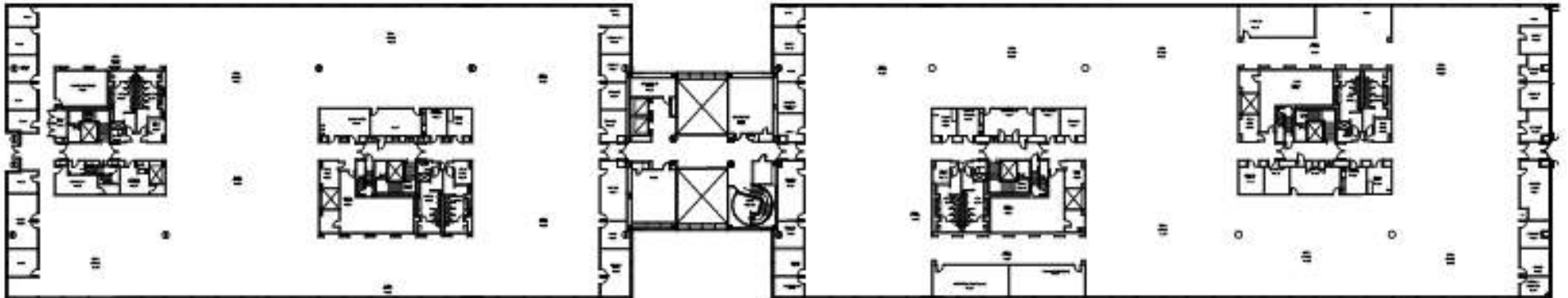
SUITE DETAILS:

- PRIVATE OFFICES
- OPEN OFFICE SPACES
- LOUNGE AREA
- FITNESS CENTER
- CEO OFFICE WITH WAITING ROOM
- CONFERENCE ROOMS
- DEMO ROOM
- AVAILABLE Q2 2026 FOR TIS

SUITE 400

105,812 RSF | FOURTH FLOOR | AVAILABLE JANUARY 2026

5005 Executive Parkway



SUITE DETAILS: • FULL FLOOR

Bishop Ranch

Andrea Reeder

Senior Vice President, Director of Leasing
andrea@bishopranch.com
925-968-4411
DRE License 1463217

Nick Polsky

First Vice President, Leasing
nick@bishopranch.com
925-380-9518
DRE License 1472715

Andy Chang

Senior Director, Leasing
achang@bishopranch.com
925-327-3922
DRE License 02040615



925-866-0100
www.bishopranch.com
DRE License 00164527