









 Lakeside


# OFFICE AVAILABILITY

2700 Camino Ramon

Unit	RSF	Plan	Tour	Suite Details	
Suite 105	7,919			<ul style="list-style-type: none"> <li>• Five furnished private offices</li> <li>• Conference room</li> <li>• Four huddle rooms/offices</li> <li>• Wellness room</li> </ul>	<ul style="list-style-type: none"> <li>• Reception area</li> <li>• Modern, open kitchen</li> <li>• Storage room</li> <li>• Large flex room for either additional storage or a second conference room</li> </ul>
Suite 150	55,822			<ul style="list-style-type: none"> <li>• Shell space</li> <li>• Tenant improvements to suit</li> </ul>	
Suite 450	29,436			<ul style="list-style-type: none"> <li>• Move in ready suite</li> <li>• Fully furnished and wired</li> <li>• Private deck</li> </ul>	<ul style="list-style-type: none"> <li>• Above standard improvements throughout</li> <li>• Adjacent to the Executive Briefing Center*</li> </ul> <p><i><a href="#">*Available to book through Roundhouse Conference Center</a></i></p>




**OFFICE AVAILABILITY**  
3001 Bishop Drive

Unit	RSF	Plan	Tour	Suite Details
Suite 400	51,555			<ul style="list-style-type: none"><li>• Move in ready suite</li><li>• Fully furnished and wired</li><li>• Private offices</li><li>• Open office spaces</li><li>• Lounge area</li><li>• CEO office with waiting room</li><li>• Conference rooms</li><li>• Demo room</li><li>• Fitness room</li><li>• Available Q2 2026 for TIs</li></ul>



# OFFICE AVAILABILITY

5005 Executive Parkway

Unit	RSF	Plan	Tour	Suite Details
Suite 400	105,812			<ul style="list-style-type: none"><li>• Full floor</li><li>• Available January 2026 for TIs</li></ul>

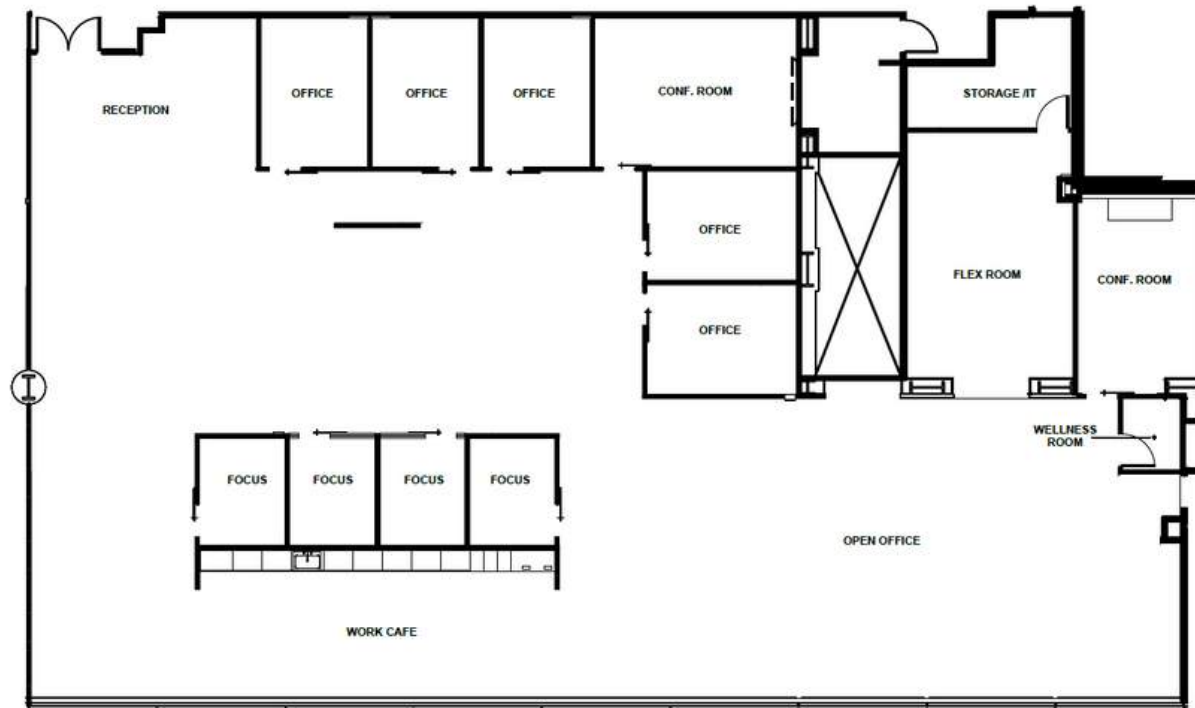
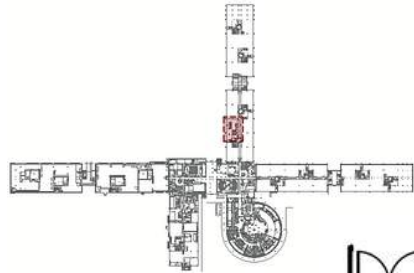


# SUITE 105

2700 Camino Ramon

7,919 RSF | 1ST FLOOR | AVAILABLE NOW

[VIRTUAL TOUR](#)



## SUITE DETAILS:

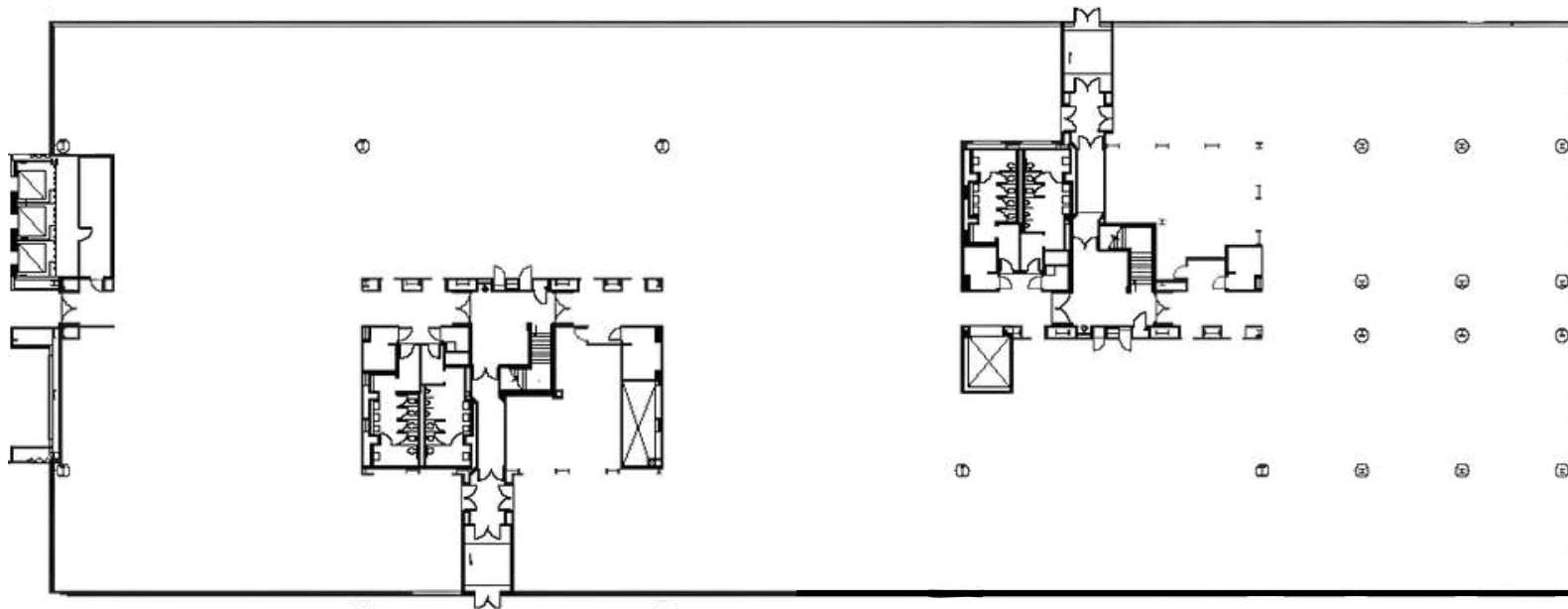
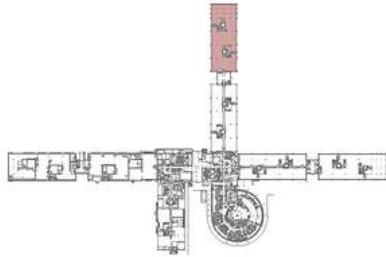
- FIVE FURNISHED PRIVATE OFFICES
- CONFERENCE ROOM
- FOUR HUDDLE ROOMS/OFFICES
- WELLNESS ROOM
- RECEPTION AREA
- MODERN, OPEN KITCHEN
- STORAGE ROOM
- LARGE FLEX ROOM FOR EITHER ADDITIONAL STORAGE OR A SECOND CONFERENCE ROOM

# SUITE 150

2700 Camino Ramon

55,822 RSF | FIRST FLOOR | AVAILABLE NOW

[VIRTUAL TOUR](#)



SUITE DETAILS:

- SHELL SPACE
- TENANT IMPROVEMENTS TO SUITE

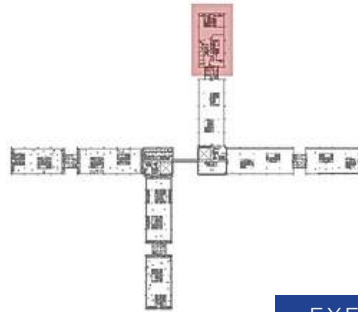


# SUITE 450

29,436 RSF | FOURTH FLOOR | AVAILABLE NOW

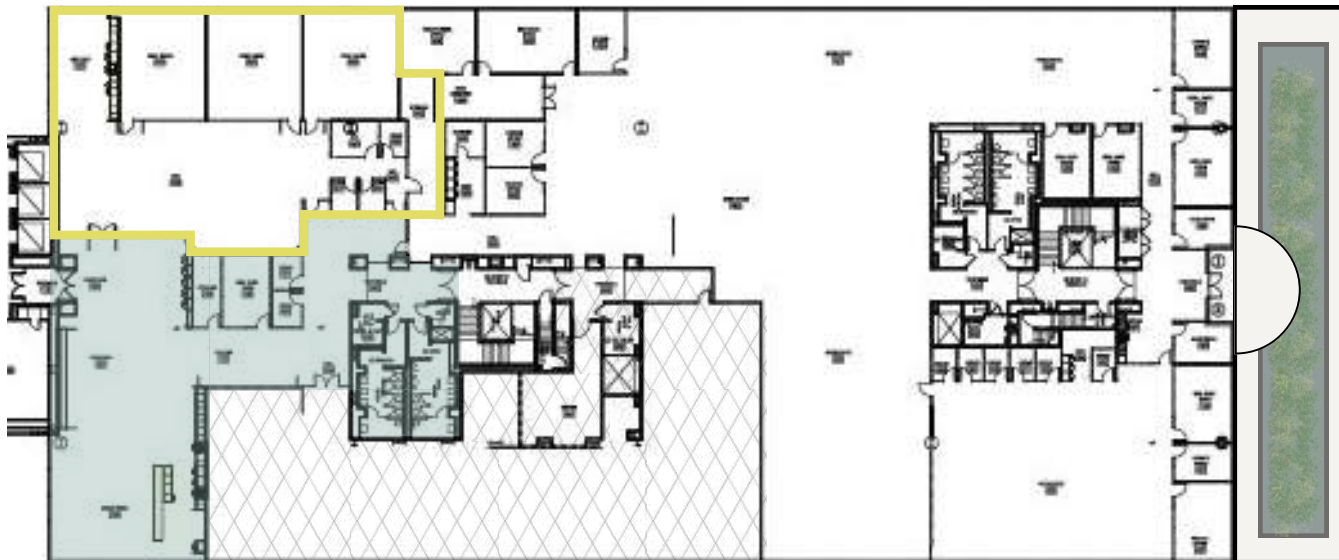
2700 Camino Ramon

[VIRTUAL TOUR](#)



EXECUTIVE BRIEFING  
CENTER

DECK

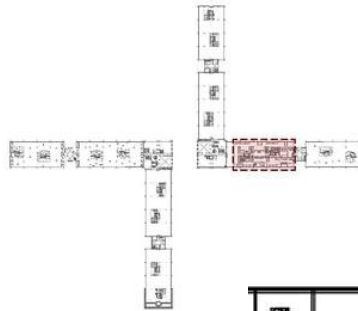


- SUITE DETAILS:
- MOVE IN READY SUITE
  - FULLY FURNISHED AND WIRED
  - PRIVATE DECK
  - ABOVE STANDARD IMPROVEMENTS THROUGHOUT
  - ADJACENT TO THE EXECUTIVE BRIEFING CENTER
- [AVAILABLE TO BOOK THROUGH ROUNDHOUSE CONFERENCE CENTER](#)

# SUITE 400

51,555 RSF | FOURTH FLOOR | AVAILABLE Q2 2026

3001 Bishop Drive



## SUITE DETAILS:

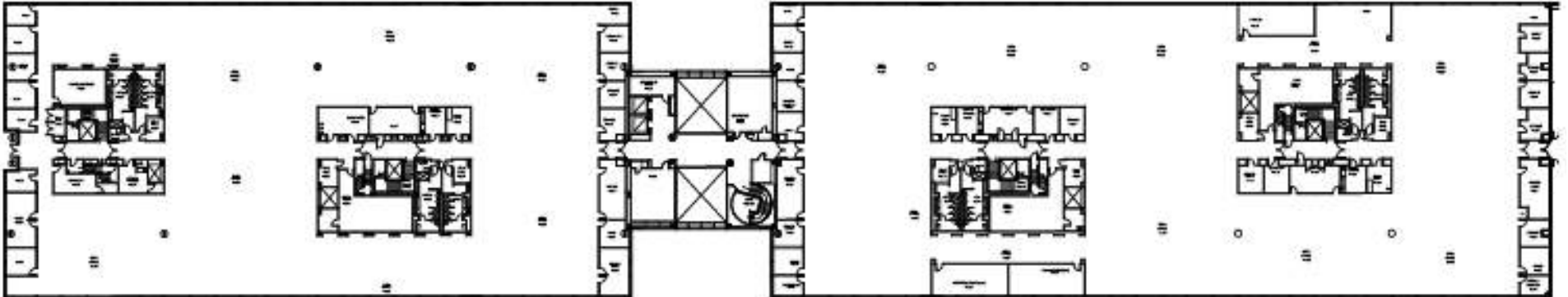
- MOVE IN READY SUITE
- FULLY FURNISHED AND WIRED
- PRIVATE OFFICES
- OPEN OFFICE SPACES
- LOUNGE AREA
- CEO OFFICE WITH WAITING ROOM
- CONFERENCE ROOMS
- DEMO ROOM
- FITNESS CENTER
- AVAILABLE Q2 2026 FOR TIS



# SUITE 400

5005 Executive Parkway

105,812 RSF | FOURTH FLOOR | AVAILABLE JANUARY 2026



- SUITE DETAILS:
- **FULL FLOOR**
  - **AVAILABLE JANUARY 2026 FOR TIS**

# Bishop Ranch

**Andrea Reeder**

Senior Vice President, Director of Leasing  
andrea@bishopranch.com  
925-968-4411  
DRE License 1463217

**Nick Polsky**

First Vice President, Leasing  
nick@bishopranch.com  
925-380-9518  
DRE License 1472715

**Andy Chang**

Senior Director, Leasing  
achang@bishopranch.com  
925-327-3922  
DRE License 02040615



925-866-0100  
www.bishopranch.com  
DRE License 00164527