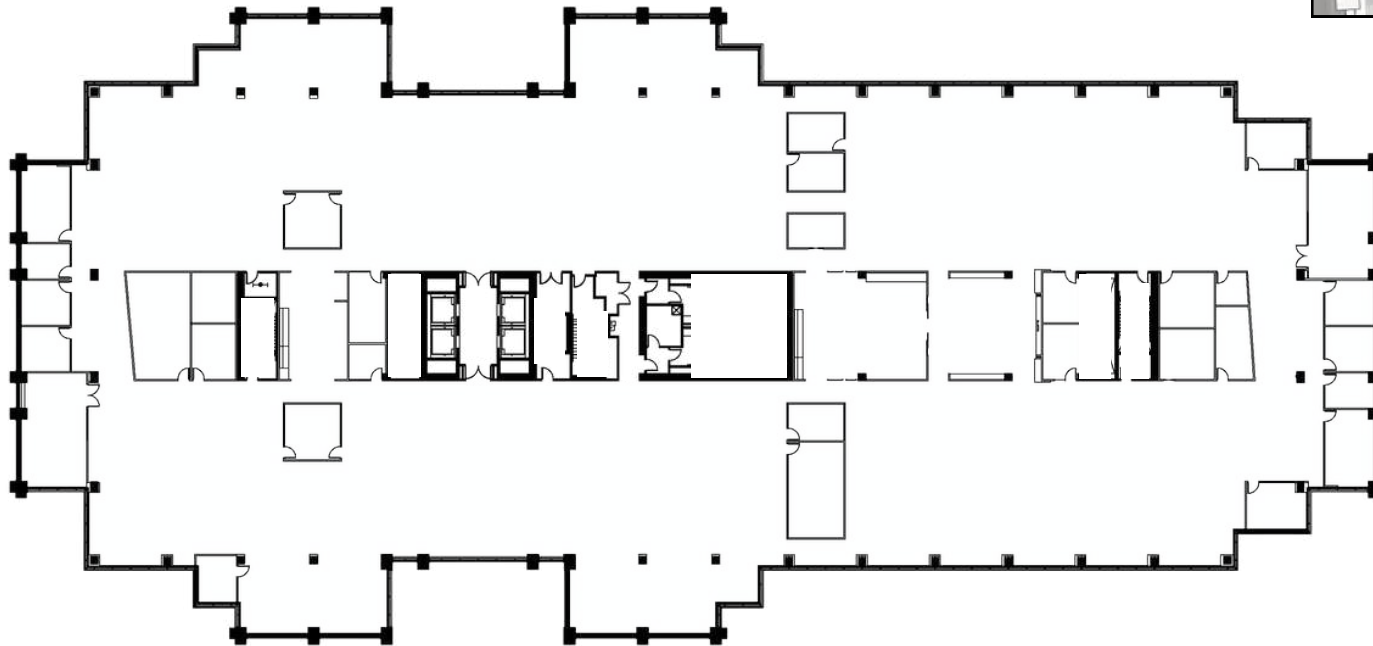


# SUITE 200

6111 BOLLINGER CANYON ROAD

54,819 RSF | 2ND FLOOR | AVAILABLE NOW

[VIRTUAL TOUR](#)



## SUITE DETAILS:

- FULL FLOOR
- MOVE-IN READY SECOND GENERATION
- TENANT IMPROVEMENT ALLOWANCE AVAILABLE
- SEVENTEEN OFFICES/HUDDLE ROOMS
- FIVE LARGE CONFERENCE ROOMS
- TWO KITCHENETTES
- ONE LIBRARY
- TWO IT ROOMS
- MULTIPLE PRINT/STORAGE/SUPPLY ROOMS SPREAD THROUGHOUT THE FLOOR