

BR11

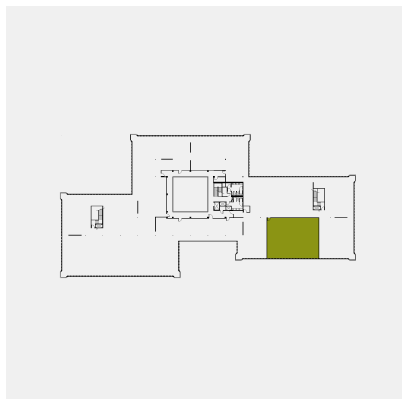
Suite 210
2,592 SQ FT

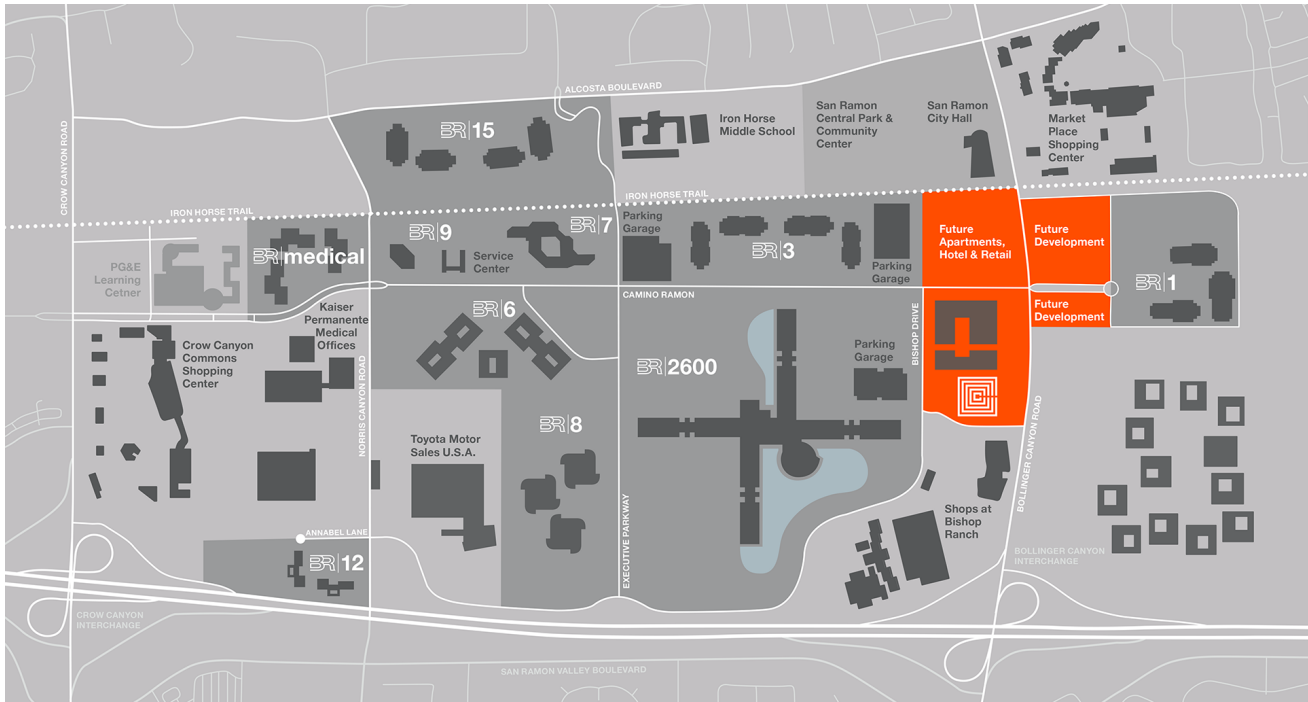
Floor 2
2305 Camino Ramon
San Ramon, CA 94583



Suite Features

- Medical shell space
- Tenant improvements to suit





Bishop Ranch 11

2301, 2303, 2305 Camino Ramon

With more than 25 medical practitioners, BR 11 has become the Bishop Ranch Medical Center. This three-building complex offers 145,989 RSF of medical/dental or office space.

BR 11 is located less than half a mile from the San Ramon Regional Hospital, and the medical offices cater to our 30,000 employees and the local community.

Bishop Ranch is situated on 585 acres in scenic San Ramon Valley, California. Recognized nationally as one of the premier business addresses in the country, the business community is home to more than 550 of the world's leading companies, from established global 500 companies to innovative startups. Bishop Ranch offers an impressive portfolio of buildings, state-of-the-art infrastructure and unparalleled customer service.

Located along the thriving I-680 corridor, Bishop Ranch is easily accessible from anywhere in the Bay Area by car and public transit.

Campus Highlights

- 585 landscaped acres
- 30 buildings
- 10 million square feet
- Conference center and meeting rooms
- On-site property management
- Architecture, engineering and construction development services
- Free BART express bus service to and from Dublin/Pleasanton and Walnut Creek BART stations
- On-site dining and retail services
- Proximity to shopping and recreation
- 375-room Marriott on-site
- A green and sustainable work environment

Building Features

- Adjacent to the Iron Horse biking and jogging trail
- Suites from 900 SF to 10,000 SF
- Free and abundant parking

