

BR1

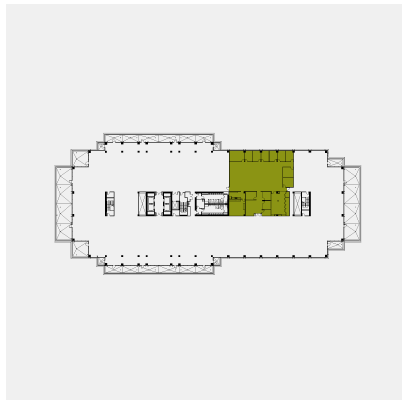
Suite 550
7,508 SQ FT

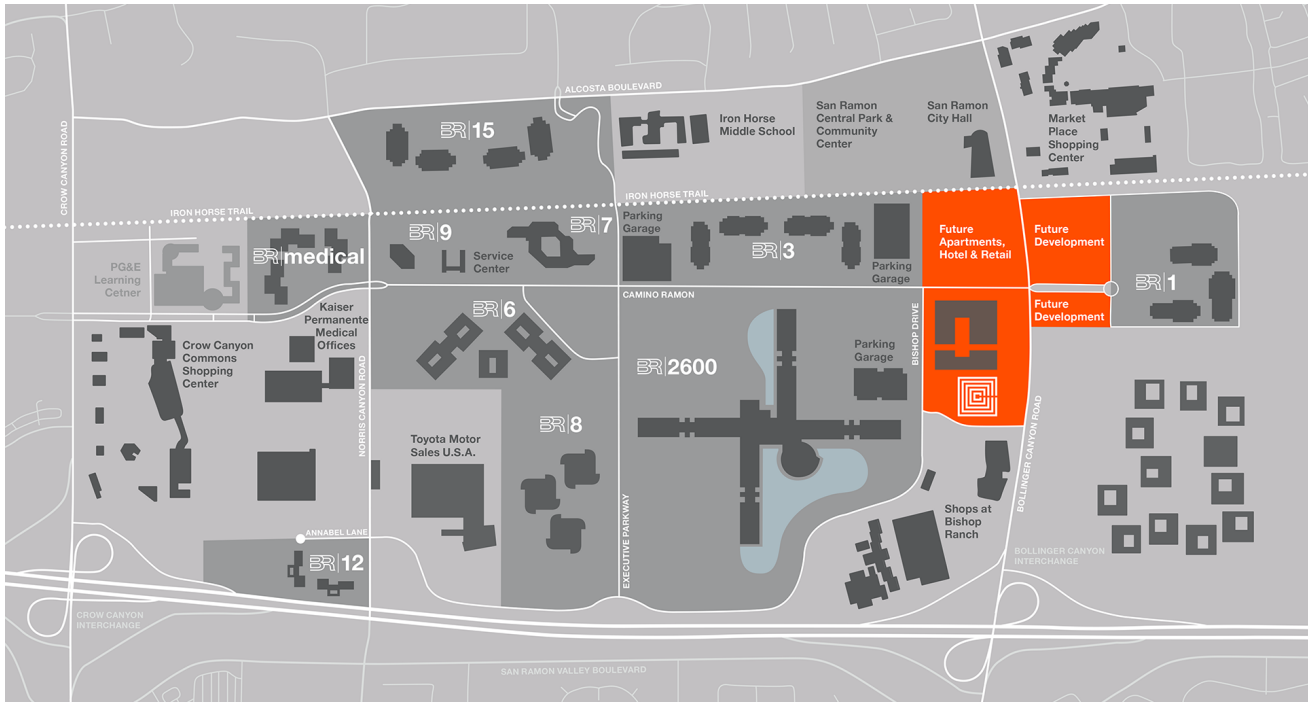
Floor 5
6111 Bollinger Canyon Road
San Ramon, CA 94583



Suite Features

- 9 private offices
- Formal reception
- Large conference room
- 4 breakout rooms
- Break room
- Server / Copy room





Bishop Ranch 1

6101, 6111, 6121 Bollinger Canyon Road

BR 1 is situated on 50 acres and fronts on the main entrance to Bishop Ranch, Bollinger Canyon Road. The three buildings, totaling 747,135 square feet, are organized in an attractive campus setting.

The central core design and large floor plans offer tenants the optimum workplace.

Bishop Ranch is situated on 585 acres in scenic San Ramon Valley, California. Recognized nationally as one of the premier business addresses in the country, the business community is home to more than 550 of the world's leading companies, from established global 500 companies to innovative startups. Bishop Ranch offers an impressive portfolio of buildings, state-of-the-art infrastructure and unparalleled customer service.

Located along the thriving I-680 corridor, Bishop Ranch is easily accessible

Campus Highlights

- 585 landscaped acres
- 30 buildings
- 10 million square feet
- Conference center and meeting rooms
- On-site property management
- Architecture, engineering and construction development services
- Free BART express bus service to and from Dublin/Pleasanton and Walnut Creek BART stations
- On-site dining and retail services
- Proximity to shopping and recreation
- 375-room Marriott on-site
- A green and sustainable work environment

Building Features

- 3 building, 777,909 RSF, class A office project
- LEED Gold Certified
- Central core design with large floor plates and accessible patios
- On-site café
- On-site showers and lockers
- Small suites available
- Adjacent to the Iron Horse biking and jogging trail
- Free and abundant parking

